

Matching The Blind To The Frame

Ian Short, MD of Uni-Blinds integral blinds manufacturer Morley Glass, explains the thinking behind the company's latest integral blind colour options – matching the blinds to window and door frames.



Being able to co-ordinate the colour of your integral blinds with the window and door frames and hardware is really important, writes Ian Short, as it means homeowners are able to fully realise their creative vision.

And very subtle differences between colours can make a big aesthetic difference.

This is why we think the new colours in our ScreenLine integral blinds range have so

much potential in today's market. The new cool greys and black, as well as the neutral tones we already offer, will appeal to any style-conscious homeowner seeking to achieve an ultra-contemporary look.

Quality

All our Uni-Blinds integral blind units are built using ScreenLine systems from Pellini – the Italian company that has operated in the field for 40 years.

One stand-out feature of ScreenLine blinds is the appearance and longevity of the colours applied to the blind slats in Venetian blinds and the fabrics of pleated blinds.

Integral blinds are exposed to direct sunlight and heat day in, day out, which means the colour finish could easily suffer. Hence why ScreenLine integral blind systems undergo thorough testing to monitor the stability of the colours over many months.

Decorative Finishes

Pictures: The colour options for Uni-Blinds from Morley Glass are extensive and will match or contrast with most frame colours – with greys and blacks being the most popular as shown on page 1 and here at the FIT Show. An automatic blind controller is shown below.

www.morleyglass.co.uk

Only when Pellini's R&D team is satisfied with the long-term performance is the colour approved for production.



Black to the future

We launched an exclusive black (B160) Venetian integral blind in 2022 and it has quickly become one of our most popular blind colours. It looks amazing with Anthracite or black frames because of its complementary appeal, yet it is also a great colour to create a strong contrast between the blinds and the window or door frames.

Anthracite still king

We know from market studies that anthracite windows and doors continue to be the most popular frame colour after white. So it is no surprise that our biggest selling colour after white is Anthracite (S159) – it is a modern classic, the demand for which remains consistently strong, and exclusively available in the UK from Morley Glass.

Agate grey – the new cool kid on the block

If there is a challenger to Anthracite, then it is definitely Agate grey (S120). This softer grey is gaining appeal amongst homeowners through its warmer and more homely feel, while at the same time giving any property a more contemporary look than white frames. Hence why the new ScreenLine Venetian in Agate grey is rapidly gaining attention.

Slate grey brings a subtle difference


Getting home décor right means being able to choose from a variety of different colours, often with subtle differences. This is one of the reasons why we launched a new shade of grey at the 2023 FIT Show – slate grey (B158). Softer than

Anthracite but bolder than Agate or silver, this is already ticking the boxes for many homeowners.

Grey on the outside, white inside

One popular window and door frame choice in recent years has been to have white on the inside and Anthracite on the exterior, enabling homeowners to achieve a contemporary outward appearance whilst retaining lightness inside rooms. Now there is a Uni-Blinds Venetian integral blind option to match these types of windows and doors with our dual-coloured slat – S159 Anthracite externally and S102 white internally.

Pleated blackouts that are anything but black

Where a homeowner is looking for blackout performance from their integral blinds, the Uni-Blinds pleated blackout blind will fit the bill. The great thing about this blind is that the blackout fabric is available in eight colours, four of which are in the grey spectrum – dove, grey sheen, grey ridge and Anthracite – as well as black. 



Changes to building regulations more or less imposed trickle vents on the window industry and generated a fear homeowners would resist them as detrimental to the aesthetic they were seeking. Yet Glazpart has proven that trickle vents don't have to be an unwanted bolt-on but can be completely integral to a window or door design.

Matching The Vent To The Frame

For the last ten years, Glazpart has consistently invested in state-of-the-art machinery, systems and tooling to provide a vast spectrum of colours and finishes of its award-winning trickle vent - the Link Vent range.

As demand for vents was always likely to increase because of updated building regulations, Glazpart made

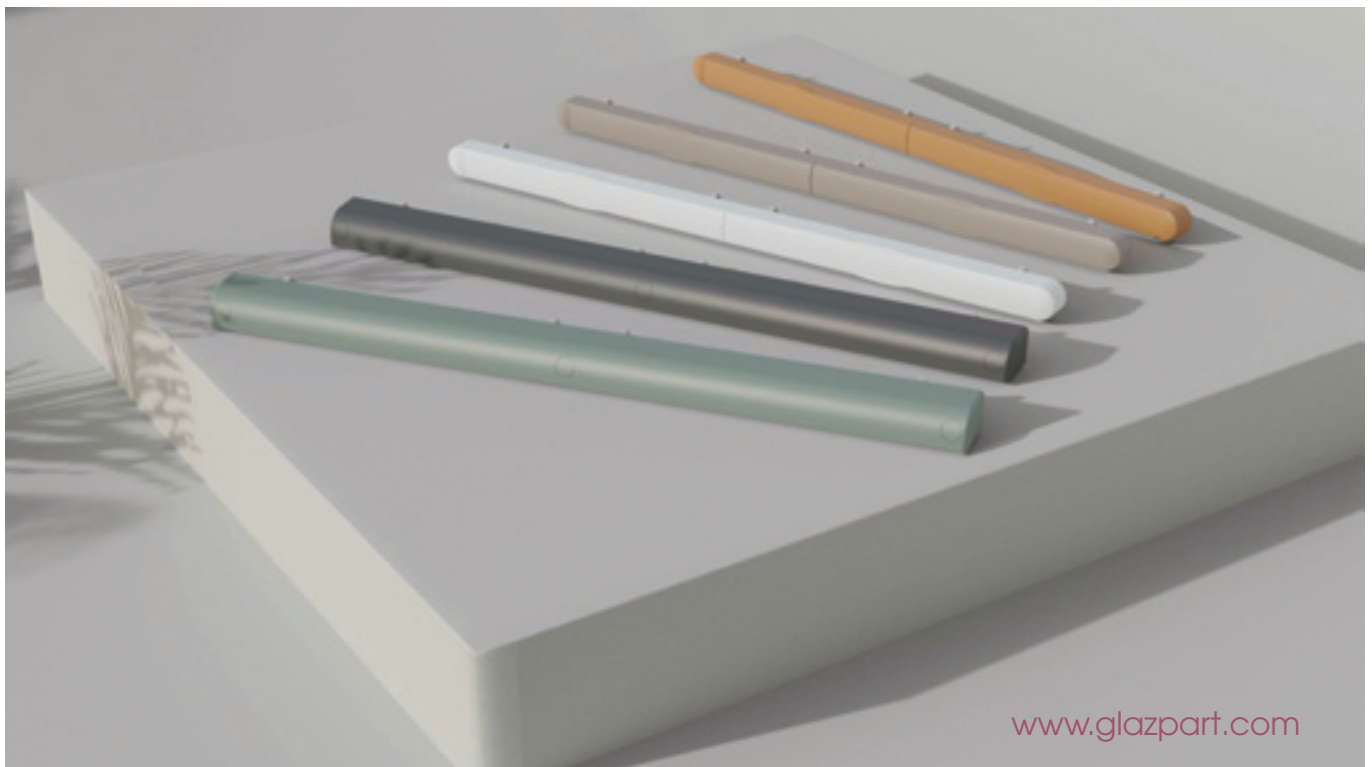
even more investment in being ready for an. It is no surprise the company is now (and has been for some considerable time) in pole position to supply all colours and/or decorative finishes of trickle vents for any window or door material be it wood, PVC-U or aluminium.

Blending in

Some of the most popular colours in the Link Vent range

include, Chartwell green, Anthracite grey, Redwood, black and cream. Link Vents can also be camouflaged on window profiles in over 40 moulded system house colours, with finishes to also match embossed and woodgrain patterned foils. They can even be sprayed at source to match aluminium RAL colours.

Glazpart launched the Link Vent in 2013 and since then,



www.glazpart.com

so that it reduces draughts by directing air away from occupants.

Getting colour to stick

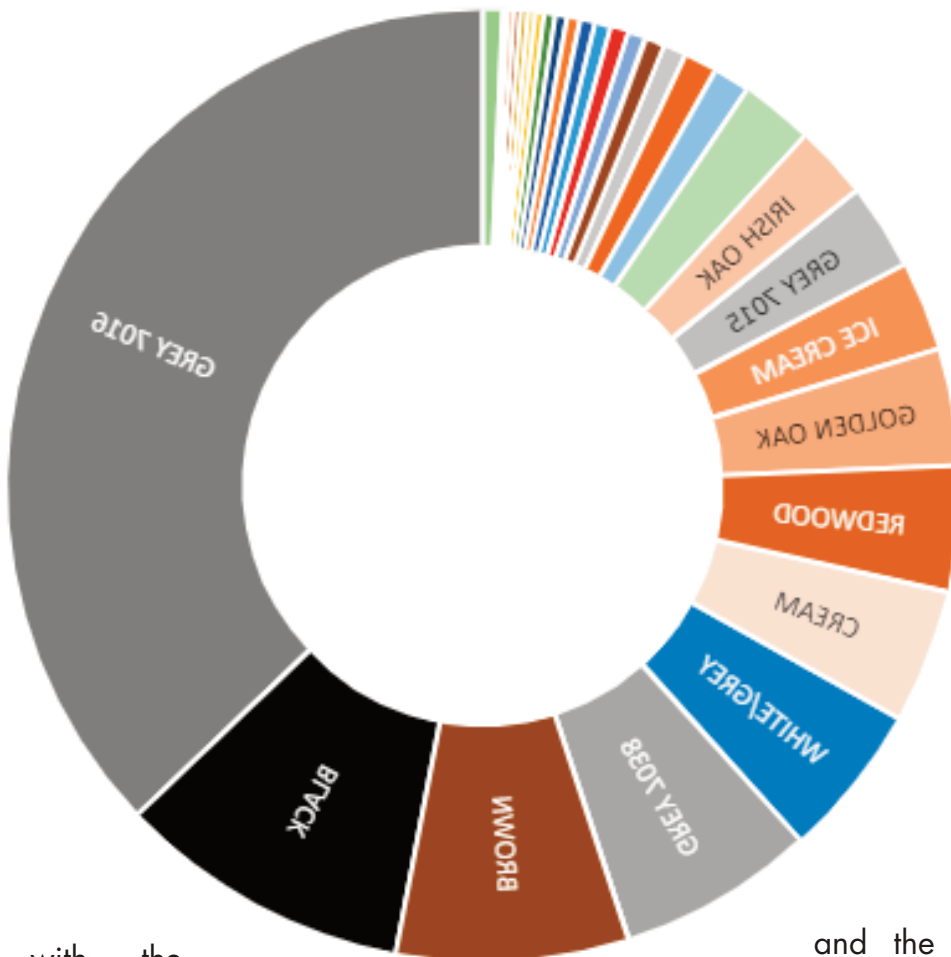
Bradley says: "Glazpart is an approved colour paint sprayer for many paint systems developed for application onto plastic. The spray systems are special coatings designed to paint PVC-U and other hard plastic such as ABS, polycarbonate and acrylic where the systems form a molecular cross bond with the plastic surface.

"We offer all standard RAL (European Colour Systems) and BS (British Standards) colours and we can match to most other colour systems. In addition, we have a specialist colour matching service that can match non-standard colours from supplied colour samples.

"For homeowners, the benefits go beyond simple aesthetics to durability as well. The colours are extremely stable and resistant to UV, so homeowners can be safe in the knowledge that the vents will hold their colour in extreme weather conditions and constant exposure to the elements without noticeable fading. Glazpart's systems and products also do not contain lead, cadmium, zinc, formaldehyde or isocyanates so they are kinder to the environment and are recyclable."

Glazpart's true colours have certainly come to the fore as the Link Vent continues to be the go-to trickle ventilation solution for both the supply chain and homeowners across the UK. **f**

Picture: Glazpart's Link Vents come in loads of shades and can be coloured to match window or door frames exactly.



with the addition of the Link Vent 4000 (in 2022), the Link Vent has become the ventilation solution of choice for building designers, fabricators and installers.

Dean Bradley, sales director of Glazpart told The Installer: "Homeowners have become more particular when it comes to choosing windows and doors

and the finished appearance is a huge factor. As such, window manufacturers and installers need to ensure they can meet homeowner's demands by offering the widest possible range. Glazpart's Link Vent range can colour match a vast range of window frame foils and we can always manufacture at short notice to ensure our customers have the products readily available."

Size matters

The Link Vent sizes include 5000, 4000 and 2500 EQA. Equivalent Area (EQA) is the measure of the vents' air flow performance and this complies with building regulations, Approved Document F1 (means of ventilation).

The clever design of the Link Vent makes it simple to install and user friendly for both opening and closing – an innovative closing action allows the closure plate to be positioned

